



SWITCHES DISCONNECTORS

SD 16 ÷ 200 A



MANUAL CHANGE OVER SWITCHES

CO-SD 16 ÷ 160 A



GENERALITIES

The modular switch disconnectors of SD series, allow the breaking and the disconnecting on load of equipment on low voltage at nominal current from 16 to 200 A.

USE

The switch disconnectors of SD series are commonly used for the following purposes:

- main switch
- switch for motors
- safety switch
- disconnecter

GENERAL CHARACTERISTICS

High breaking capacity (AC 22 A - AC 23 A)
Double break contacts on each pole
High electrical and mechanical endurance
Resistant to damp heat
IP20 degree of protection (with accessory)
Modular execution, basic mounting on 35 mm DIN rail and by screws, modular window 45 mm.

RANGE

SD1 three poles 16 - 25 - 32 - 40 - 63 A
SD2 three poles 63 - 80 - 100 - 125 A
SD3 three poles 100 - 125 - 160 - 200 A

ADDITIONAL POLES

Fourth neutral pole makes earlier and opens later than the phase contacts.

Fourth pole solid neutral.

Earth pole. Contemporary pole under request.

OPERATING MECHANISM

Black (standard execution) or emergency direct handle padlockable in 0 position. Handle with door interlock handle, black or emergency handle padlockable with up to three padlocks in 0 position.

IP 65 degree of protection.

STANDARD SERVICE, MOUNTING AND TRANSPORT CONDITIONS

Transport and storage ambient temperature - 25°C + 55°C
working ambient temperature - 20°C + 40°C
in case of higher ambient temperature (t_a), consider the following derating formula:

$$I_{The} = k I_{Th} \text{ where } K = 1 - \frac{t - 40}{100}$$

altitude max 2000 m a.s.l.

pollution degree 3 according IEC 60947-1 duty (UNI EN 60947-1):

8 hours; uninterrupted; intermittent 60% class 30

For other operating conditions please contact the manufacturer.

CONFORMITY TO STANDARDS

IEC 60947-1 | IEC 60947-3 | UNI EN 60947-1 | UNI EN 60947-3 |

UL 508A

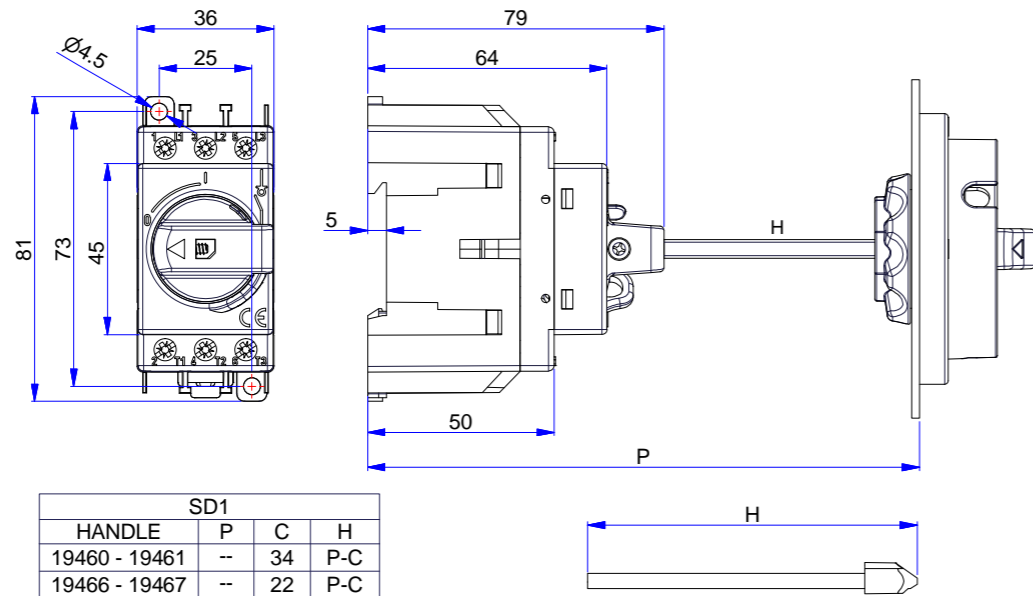
CERTIFICATES AND APPROVALS

IEC | EAC | UL EAC | CSA

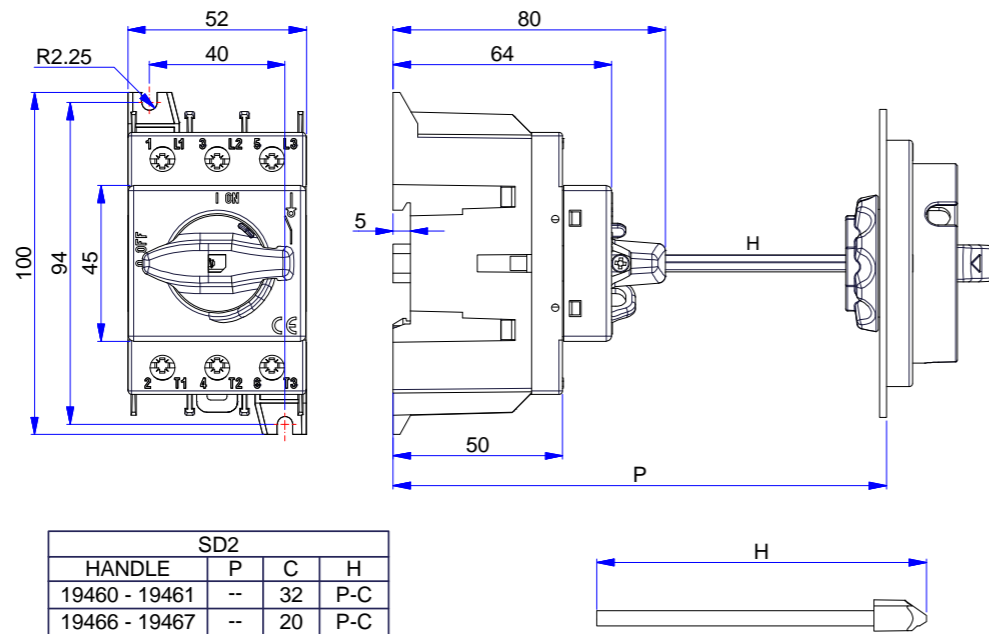


Caratteristiche tecniche _technical features	Tipo _Type	SD1						SD2			SD3			
		In	A	16	25	32	40	63	80	100	125	125	160	200
Tensione nominale d'isolamento _Rated insulation voltage	Ui	V	1500	1500	1500	1500	1500	1500	1500	1500	1500	1500	1500	1500
Tensione nominale tenuta impulso _Shock resistance	Uimp	kV	4	4	4	4	4	8	8	8	8	8	8	
Corrente nominale termica a 40°C _Thermal current at 40°C	I _{th} / I _{the}	A	16	25	32	40	63	80	100	125	125	160	200	
Corrente nominale d'impiego _Rated operational current														
AC-21A	415V	A	16	25	32	40	63	80	100	125	125	160	200	
	500V	A	16	25	32	40	63	80	100	125	125	160	160	
	690V	A	16	25	32	40	63	80	100	125	125	160	160	
AC-22A	415V	A	16	25	32	40	63	80	100	125	125	160	200	
	500V	A	16	25	32	40	63	80	100	125	125	160	160	
	690V	A	16	25	32	40	63	80	100	125	125	160	160	
AC-23A/B	415V	A	16	25	32	40	63	80	100	100	125	160	160	
	500V	A	16	16/25	32	40	63	63	63	63	125	160	160	
	690V	A	16	16/25	32	40	63	63	63	63	125	125	125	
Potere di chiusura a 415V AC23 _Rated making capacity at 415V AC23		A	160	250	320	400	630	800	1000	1250	1250	1600	1600	
Potere di interruzione a 415V AC23 _Breaking capacity at 415V AC23		A	128	200	256	320	504	640	800	1024	1000	1280	1280	
Potenza nominale di impiego AC23 _Rated operational power AC23	415V	kW	8	11	14	18	29	37	46	46	55	69	69	
	500V	kW	8	14	17	22	35	35	35	35	65	83	83	
	690V	kW	12	19	24	31	48	48	48	48	90	90	90	
Corrente di breve durata per 1 sec _Short-circuit withstand current 1 sec	400V	kA	1,1	1,1	1,1	1,1	1,1	1,5	1,5	1,5	3	3	3	
Potere di chiusura in corto circuito _Short-circuit making capacity	400V	kA	2,1	2,1	2,1	2,1	2,1	3,5	3,5	3,5	4,5	4,5	4,5	
Corrente di corto circuito condizionata da fusibile _fuse protected short-circuit withstand														
Tipo fusibile gG DIN _gG DIN Backup associated fuse rating		A	16	25	32	40	63	80	100	125	125	160	200	
Valore efficace/R.M.S. value		kA	10	10	10	10	10	10	10	10	10	10	10	
Durata meccanica _Mechanical endurance		n.	10000	10000	10000	10000	10000	10000	10000	10000	10000	10000	10000	
Durata elettrica _Electrical endurance		n.	1500	1500	1500	1500	1500	1500	1500	1500	1500	1500	1500	
Potenza dissipata per polo _Power loss per pole		W	0,1	0,1	0,2	0,3	0,8	1,3	2	3,1	2,5	3	3	
Dimensione cavo _Cable section		mm ²	16	16	16	16	16	50	50	50	70	70	70	
Max.torsione terminali _Tightening torque		Nm	2	2	2	2	2	2,5	2,5	2,5	6	6	6	
Sforzi di manovra _Operating torque		Nm	1,6	1,6	1,6	1,6	1,6	2	2	2	2,6	2,6	2,6	
Peso netto _Net weight	3P	Kg.	0,13	0,13	0,13	0,13	0,13	0,25	0,25	0,25	0,4	0,4	0,4	
	4P	Kg.	0,16	0,16	0,16	0,16	0,16	0,32	0,32	0,32	0,5	0,5	0,5	
	6P	Kg.	0,3	0,3	0,3	0,3	0,3	0,55	0,55	0,55	0,8	0,8	0,8	
	8P	Kg.	0,4	0,4	0,4	0,4	0,4	0,62	0,62	0,62	1	1	1	

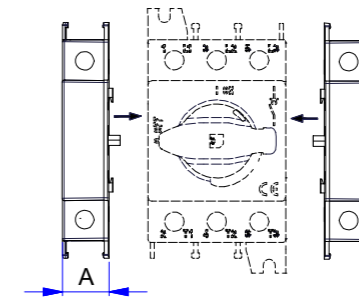
SD1 3 poles



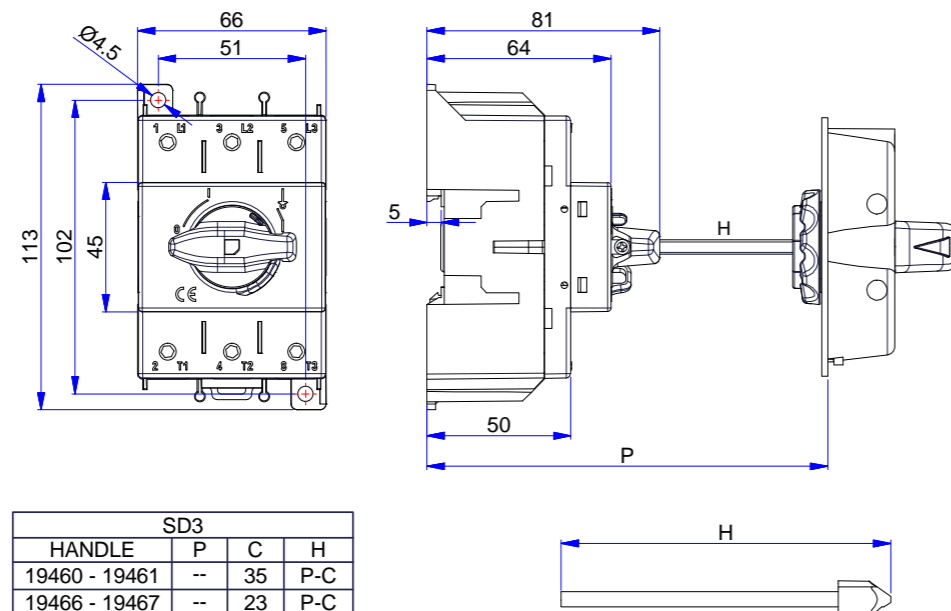
SD2 3 poles



4P additional poles assembly



SD3 3 poles



Tipo_Type	SD1	SD2	SD3
A	14	17	22

MANUAL CHANGEOVER SWITCHES

CO-SD 16 ÷ 160 A

_SD CHANGE-OVER SWITCHES GENERALITIES

The manual change-over switches SD series, allow the change-over of two low voltage electrical circuits. They are made by two standard switches of SD series mechanically interlocked.

Available in standard version I-II (pos 0 both switches are OFF) and in close transition "OL" version I-I+II-II (pos I+II both switches are ON).

_RANGE

CO-SD1 change-over switches 16 - 25 - 32 - 40 - 63 A
 CO-SD2 change-over switches 80 - 100 - 125 A
 CO-SD3 change-over switches 125 - 160 A

_OPERATING MECHANISM

Direct handle padlockable in 0 position.
 Handle with and without door interlock handle.

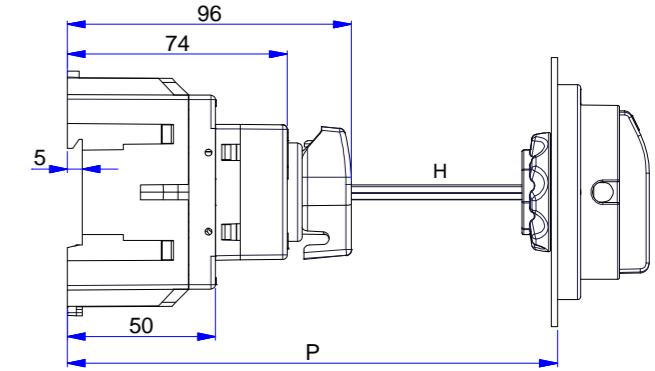
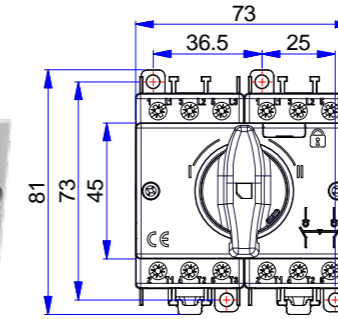
_CONFORMITY TO STANDARDS

IEC 60947/1-3 | UNI EN 60947/1-3 | UL | EAC | CSA

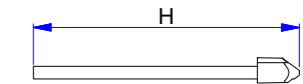


Close look to Changeover (CO) version

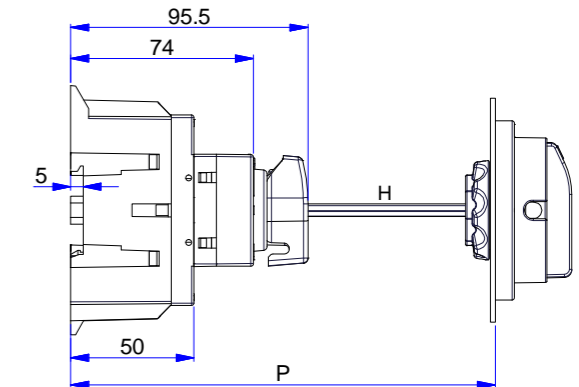
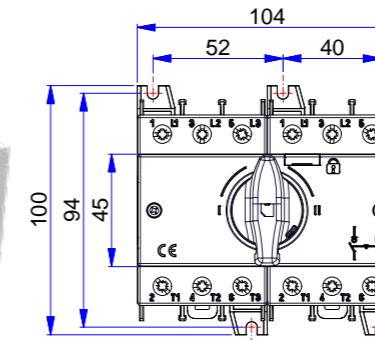
CO SD1



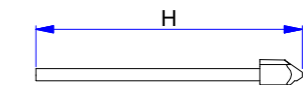
CO SD1			
HANDLE	P	C	H
19462	--	52	P-C
19459	--	40	P-C



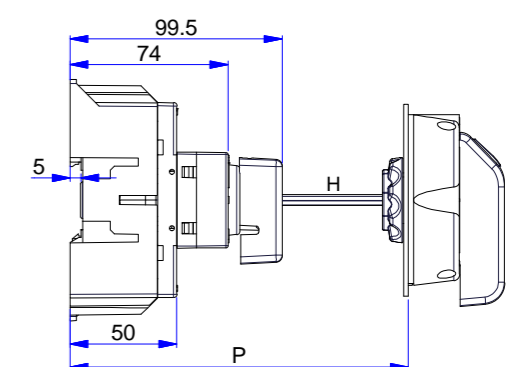
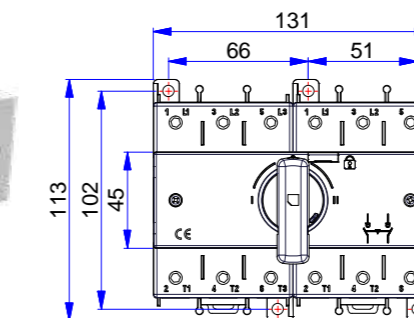
CO SD2



CO SD2			
HANDLE	P	C	H
19462	--	52	P-C
19459	--	40	P-C



CO SD3



CO SD3			
HANDLE	P	C	H
19462	--	52	P-C
19459	--	40	P-C

